

PASTEL SERIAL NUMBER TRACKING MODULE

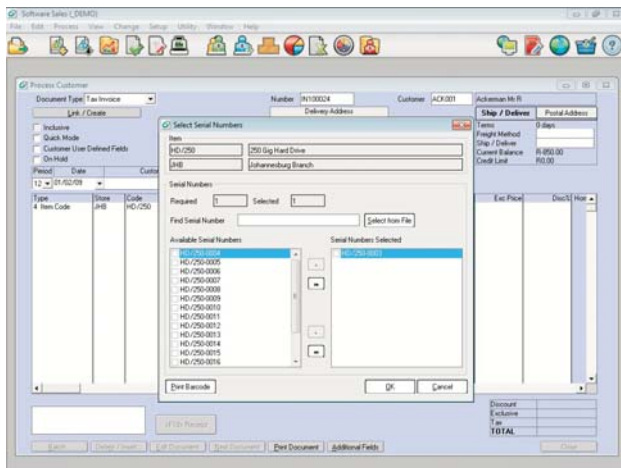
[The Pastel Serial Number Tracking module allows users to keep track of individual inventory items that have serial numbers.]

Serial number items are identical to physical inventory items, with one exception - each item has its own unique serial number.

[With Pastel's Serial Number Tracking module, you can perform the following tasks:]

- Track movement of individual inventory items through the system using unique serial numbers.
- Forced entry of a serial number for serialised stock items ensures a full and complete history of the movement of each individual stock item.
- Select per inventory item whether to serialise the individual item or not.
- Choose whether to allocate serial numbers to sales orders.
- Create sequential serial numbers by entering one serial number template and use the system to automatically create incrementing serial numbers, or enter serial numbers individually.
- Import serial numbers from a file.
- Print barcodes for serial numbers.
- Use the Count Inventory function to count physical serial items in stock against theoretical items on hand.

This screen shows that invoicing with serial numbers is as simple as selecting the serial number from an available list.



[Some of the reports available include:]

- Serial Number History to view movement history for serial number items.
- Serial Number Listing to view serial numbers per inventory item, along with their status.

[Additional Module Information]

If you use the Multi-Stores module, you can transfer serialised inventory items between stores. If you use the Bill of Materials module, you can manufacture into serialised items.